



Issue 7

Completion of Coast Road Cycle Scheme

August 2019

Welcome to the latest issue of Your Coast Road Update – a regular e-bulletin keeping you up to date with the Coast Road Cycle Scheme.

Since April, North Tyneside Council, in partnership with Capita, has been carrying out improvements to the footpath on the A1058 Coast Road.

The works form part of the council's Coast Road Cycle Scheme, which was largely completed in summer 2018.

However, the team was unable to complete the section of path on the Coast Road leading to and from the A19/A1058 interchange during Highways England's major works to construct the Silverlink triple-decker roundabout.

Following the opening of the new Silverlink underpass, the construction team was able to gain access to finish the final section of shared-use path.

At a glance

On the road:

Following works, 30mph speed restriction will be removed from eastbound/westbound carriageways. Cones will remain in place for Highways England's works.

New 50mph speed limit will be in place between Billy Mill junction and Willington Square interchange on the A1058 Coast Road.

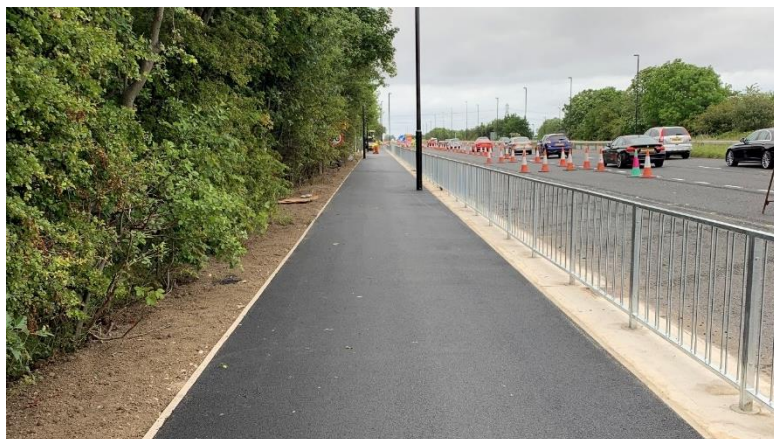
Walking and cycling:

The new shared path on the A1058 Coast Road, leading to and from the Silverlink A19/A1058 interchange, is open.

Blue pedestrian/cyclist bridges over the Silverlink slip roads remain closed while Highways England's works are under way.

The bus stop – served by Arriva 306 and 308 – has returned to its original position on the entry slip road, next to McDonald's.

Progress



Capita's construction team has completed its works to the Coast Road cycle route.

The team focused on widening the existing path on the A1058 Coast Road – leading to and from the Silverlink interchange – to create a shared-use footpath/cycleway.

During the past few weeks, the team has completed the final section between the former Poundworld premises and Norham Road. The council's road surfacing contractor Tarmac has also applied the path's final surface layer.

The Coast Road cycle route will be fully open following Highways England's works to complete the blue pedestrian/cyclist bridges, which are expected to be in operation from week commencing August 19.

In the meantime, cyclists/pedestrians should continue to use the exit/entry slip roads at the A19/A1058 interchange.

Following completion of the cycle route, the 30mph speed restriction on the eastbound/westbound carriageways will be replaced with a 50mph speed limit.

The cones will remain on the eastbound carriageway until Highways England has completed its works.

The bus stop – serving Arriva 306 and 308 – has returned to its original position on the entry slip road, next to McDonald's.

If you wish to unsubscribe, please email: roads@northtyneside.gov.uk and put "Coast Road Unsubscribe" in the subject field.

If you have any queries, contact the Major Projects Team on (0191) 643 6500 or roads@northtyneside.gov.uk

