



**Northumbria Healthcare**  
NHS Foundation Trust

# **North Tyneside Health and Wellbeing Board – 13 Sept 2018**

Jim Mackey, Chief Executive

building  
a caring  
future

HOSPITAL | COMMUNITY | HOME



# Introduction

- Summary of key issues for Northumbria over last 6 – 9 months
- Current Performance
- Local Strategic Issues
- Current National and Regional Policy Context
- Summary and Discussion

# Key Issues for Northumbria over last 6-9 months

- Strong performance, but not as good as we had been used to
- The Northumbria – need for a reset
- Getting back to the Plan – issues for North Tyneside General and local services
- Making sense of national and regional policy (STP, ACO's etc)
- Out of hospital focus.

# Key issues for Northumbria....

- NSECH Re-set in March
- Strategy Re-fresh

***Patients and staff*** central to everything we do

***Ambition*** to be the best at everything we do

Protecting ***The Northumbria for the sickest*** patients, and maximising patient interaction locally

Big ***focus on out of hospital care***, incl primary, community and social, plus population health

We take our role in ***community*** seriously

***Money is tight*** – we need to ***spend it wisely***

Commitment to be a ***good partner/corporate citizen***

***Prepared to innovate*** and take measured risk

***Engaging*** and willing to ***listen***

- Understanding, influencing and fit with Regional and National Policy

# National performance metrics

TRUST	Accident & Emergency		18 weeks RTT			Diagnostics	Cancer							
	All	Type 1	Admitted	Non admitted	Incomplete	All	2 Week wait		31 Day				62 day	
							From GP referral	Breast symptoms	Diagnosis to 1st treatment	Subsequent treatment - Drug	Subsequent treatment - Radiotherapy	Subsequent treatment - Surgery	Referral to treatment	From screening service
North Cumbria	88.5%	85.6%	50.2%	81.7%	85.9%	98.2%	93.9%	89.5%	97.8%	100.0%	91.1%	66.7%	81.3%	84.6%
South Tyneside	95.5%	95.1%	96.0%	98.1%	96.2%	100.0%	91.6%	-	100.0%	100.0%	-	100.0%	90.3%	100.0%
Newcastle	94.2%	90.8%	86.8%	94.4%	94.2%	98.0%	95.1%	91.1%	97.0%	98.5%	98.4%	93.7%	81.8%	85.7%
Morecambe Bay	87.2%	84.3%	57.0%	91.5%	85.1%	93.8%	Data not available from Northern Cancer Network							
Northumbria	97.5%	95.3%	78.7%	93.5%	93.6%	99.6%	95.4%	99.4%	99.3%	100.0%	-	100.0%	64.9%	100.0%
Sunderland	89.2%	82.9%	82.6%	94.8%	94.3%	99.6%	94.9%	-	97.6%	100.0%	-	100.0%	74.6%	100.0%
Gateshead	95.2%	93.7%	#N/A	92.2%	92.8%	99.3%	96.4%	92.6%	100.0%	100.0%	-	100.0%	69.6%	95.3%
South Tees	95.9%	95.0%	82.4%	95.4%	90.1%	97.5%	94.2%	93.3%	95.8%	100.0%	99.3%	94.0%	83.5%	100.0%
North Tees & Hartlepool	97.7%	91.4%	90.3%	96.6%	94.7%	98.4%	94.0%	97.7%	99.3%	100.0%	-	100.0%	84.4%	85.7%
County Durham & Darlington	90.0%	83.3%	76.3%	96.8%	92.5%	99.9%	94.0%	93.7%	97.7%	100.0%	-	100.0%	87.7%	0.0%
Royal Free London	89.5%	87.7%	75.8%	87.8%	79.8%	99.7%	Data not available from Northern Cancer Network							
Frimley	90.8%	90.8%	69.3%	88.8%	92.1%	99.7%								
Salford Royal	89.2%	88.5%	70.3%	82.8%	92.1%	96.2%								
Wrightington, Wigan and Leigh	90.4%	89.5%	77.8%	96.8%	94.2%	99.3%								

Accident & Emergency: quarter to date as at July 2018 (NHS England)

18 weeks RTT: June 2018 (NHS England)

Diagnostics: June 2018 (NHS England)

Cancer: July 2018 (NHS England)

Please note that the RTT - admitted figures shown are unadjusted, as adjusted figures are no longer submitted

Internally reported admitted RTT figures are adjusted

Admitted and non-admitted RTT are no longer targets

## A&E Attendances: NHS and independent sector organisations in England: Top 10 ranking

Trust	Q1 2018-19	Ranking
Luton And Dunstable University Hospital	98.5%	1
Yeovil District Hospital	98.5%	2
<b>Northumbria Healthcare</b>	98.3%	3
Sheffield Children's	98.1%	4
North Tees And Hartlepool	97.8%	5
Dorset County Hospital	97.5%	6
Surrey And Sussex Healthcare	96.8%	7
Colchester Hospital University	96.8%	8
South Tees Hospitals	96.7%	9
Royal Cornwall Hospitals NHS Trust	95.7%	10
England	89.9%	

## A&E Attendances: NHS and independent sector organisations in England: North East England and Cumbria

Trust	Q1 2018-19	Ranking
<b>Northumbria Healthcare</b>	98.3%	3
North Tees And Hartlepool	97.8%	5
South Tees Hospitals	96.7%	9
Gateshead Health	95.3%	14
South Tyneside	95.0%	19
The Newcastle Upon Tyne Hospitals	94.9%	20
County Durham And Darlington	91.2%	45
North Cumbria University Hospitals	90.3%	52
City Hospitals Sunderland	89.6%	58

England	89.9%
---------	-------

## A&E Attendances: NHS and independent sector organisations in England: Bottom 10 ranking

Trust	Q1 2018-19	Ranking
Nottingham University Hospitals NHS Trust	80.7%	128
King's College Hospital NHS Foundation Trust	80.5%	129
East Kent Hospitals University NHS Foundation Trust	80.1%	130
Medway NHS Foundation Trust	79.7%	131
Wye Valley NHS Trust	78.5%	132
Worcestershire Acute Hospitals NHS Trust	78.1%	133
The Princess Alexandra Hospital NHS Trust	75.8%	134
St Helens And Knowsley Hospital Services NHS Trust	74.3%	135
Shrewsbury And Telford Hospital NHS Trust	73.7%	136
United Lincolnshire Hospitals NHS Trust	73.3%	137
England	89.9%	



## A&E Attendances: NHS and independent sector organisations in England: Top 5... Bottom 5

Trust	Q1 2018-19	Ranking
Luton And Dunstable University Hospital	98.5%	1
Yeovil District Hospital	98.5%	2
<b>Northumbria Healthcare</b>	98.3%	3
Sheffield Children's	98.1%	4
North Tees And Hartlepool	97.8%	5

Worcestershire Acute Hospitals NHS Trust	78.1%	133
The Princess Alexandra Hospital NHS Trust	75.8%	134
St Helens And Knowsley Hospital Services NHS Trust	74.3%	135
Shrewsbury And Telford Hospital NHS Trust	73.7%	136
United Lincolnshire Hospitals NHS Trust	73.3%	137

England	89.9%
---------	-------

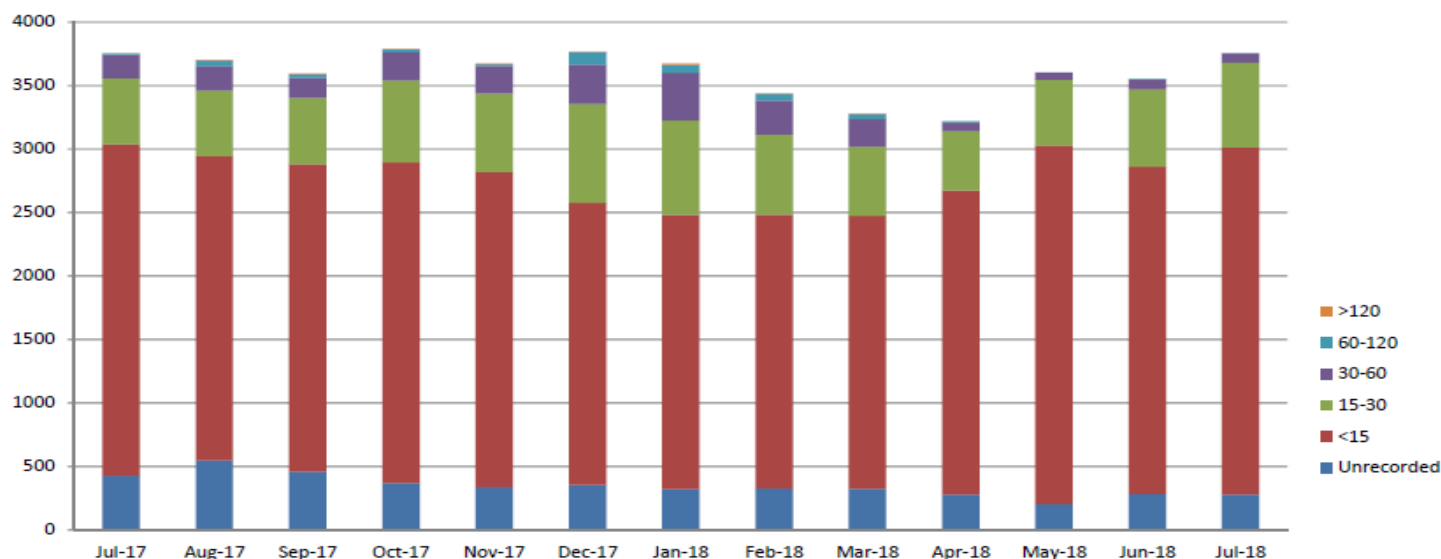
# Financial Performance

Provider	Quarter 1 £ '000s	Forecast Outturn £ '000s
Northumbria	7,235	25,143
Newcastle	(1,372)	(13,581)
County Durham	(5,854)	7,267
Gateshead	(2,082)	742
North Tees	(6,141)	(20,220)
North Cumbria	(17,116)	(37,628)
South Tyneside	(3,824)	(12,065)
South Tees	(3,615)	(3,804)
Sunderland	(5,471)	(11,909)
<b>Total</b>	<b>(38,240)</b>	<b>(66,055)</b>

**Per NHSI Q1 report**

# Ambulance Handover Delays

Month Overview



	Jul-17	Aug-17	Sep-17	Oct-17	Nov-17	Dec-17	Jan-18	Feb-18	Mar-18	Apr-18	May-18	Jun-18	Jul-18
>120	2	2	6	2	3	2	10	3	5	0	0	0	0
60-120	11	48	30	22	17	99	62	54	39	7	0	5	3
30-60	184	192	154	223	216	308	373	264	219	72	56	77	71
15-30	522	517	524	644	619	778	747	632	540	466	516	609	669
<15	2606	2396	2420	2527	2480	2222	2158	2157	2151	2394	2826	2578	2733
Unrecorded	430	548	461	369	338	356	322	327	326	280	205	283	279

# National and Regional Policy

- Mess left by the 2012 Act
- Commissioner and Provider Spilt
- Competition Law and the “Market”
- Financial Position
- Performance Deterioration
- “Systems” thinking
- Politics....
- Settlement and the 10 Year Plan

# Key Local Issues....

- Specifically, Key Local Issues
  - Investment in North Tyneside
    - Single rooms/bathrooms and environment
    - Flow to Cramlington and back
    - Procurement and Integration
    - Primary Care on site at NTGH
    - Community Pharmacy on site at NTGH
    - Community Orientation
    - Place in the community
    - Fit with CCG Strategy “Future Care”
    - Work with North Tyneside Council
    - Our role as a major employer
    - Investment of c£20m
    - North of Tyne Plans and Relationships

# National and Regional Policy

- STP's – 3 into one and name changes
- Local, sub-regional collaborations (ICP's)
- **Place**-based focus
- Collaboration with other providers
- Focus on citizens, **not** institutions
- Concerns about privatisation
- Concerns about a “Grand Plan” and rationing...
- Assurance from me.....

# Summary and Discussion



**Northumbria Healthcare**  
NHS Foundation Trust

**Thank you.**

building  
a caring  
future

HOSPITAL | COMMUNITY | HOME

